





Page 164
Leg standard equipment 650



Page 164
Leg standard equipment 750



Page 164
Leg standard equipment, special height min. 150 mm



Page 164
Sleeve for Table Leg



Page 166
Leg height-adjustable 450-700



Page 166
Leg height-adjustable 550-900



Page 166
Sleeve for Table Leg



Page 168
Leg with Caster and Locking Brake 650



Page 169
Leg height-adjustable with Caster and locking Brake 550-750



Page 170
Leg with Floor Anchoring 650



Page 170
Leg with Floor Anchoring 750



Page 172
Fastening Plate with Caster for Work Table system 28 and 16



Page 173
Base Plate



Page 173
Base Plate



Page 174
Hydraulic Lift for Work Table

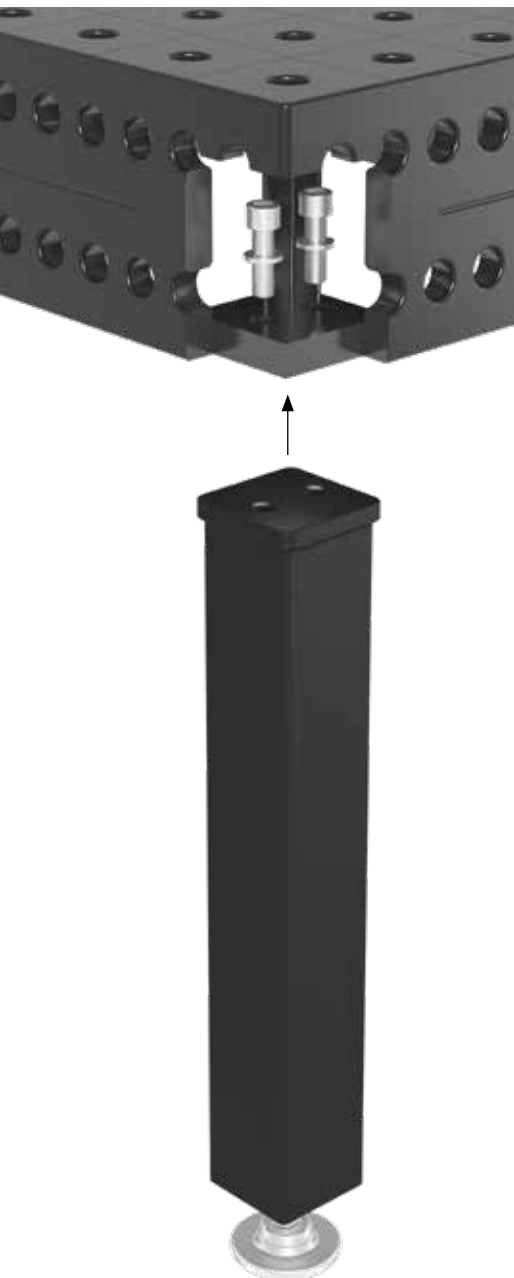
Table Legs

INSTALLATION TABLE LEGS:

Per table leg two cylinder bolts with spring rings are inserted in the mounting panel. Afterwards the table leg is bolted at a torque of 150 Nm.

Screws are included in delivery.

Please follow enclosed installation instructions.

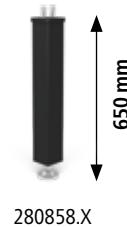


LEG STANDARD EQUIPMENT

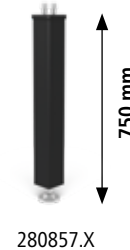
Page 164

STYLES

650
750
Special Sizes



Bearing load:
2,000 kg
per leg



Bearing load:
2,000 kg
per leg

LEG HEIGHT-ADJUSTABLE

Page 166

STYLES

450-700
550-900
Special Sizes



Bearing load:
2,000 kg
per leg



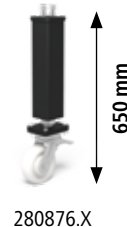
Bearing load:
2,000 kg
per leg

LEG WITH CASTER AND LOCKING BRAKE

Page 168

STYLES

650
Special Sizes



Bearing load:
800 kg
per leg

LEG HEIGHT-ADJUSTABLE WITH CASTER AND LOCKING BRAKE

Page 169

STYLES

550-750
Special Sizes



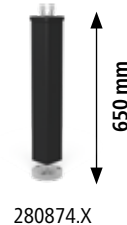
Bearing load:
800 kg
per leg

LEG WITH FLOOR ANCHORING

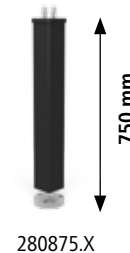
Page 170

STYLES

650
750
Special Sizes



Bearing load:
2,000 kg
per leg



Bearing load:
2,000 kg
per leg

Table legs not suitable for Basic tables.



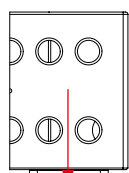
CAPACITY PER TABLE LEG

Maximum allowable load per leg for all system 28 tables equals 800-2.000 kg, depending on leg type.

Computationally resulting in substantially higher overall loads. However, the indicated bearing loads were calculated with reserves for safety reasons.

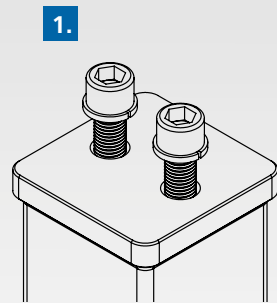
Please consult with manufacturer if higher overall loads are required.

FOR MAXIMUM SECURITY:



Allowable bearing load

Vertical force direction: 20 kN



1. ALLEN SCREW

- with M16 thread
- with Spring ring

2. MATERIAL

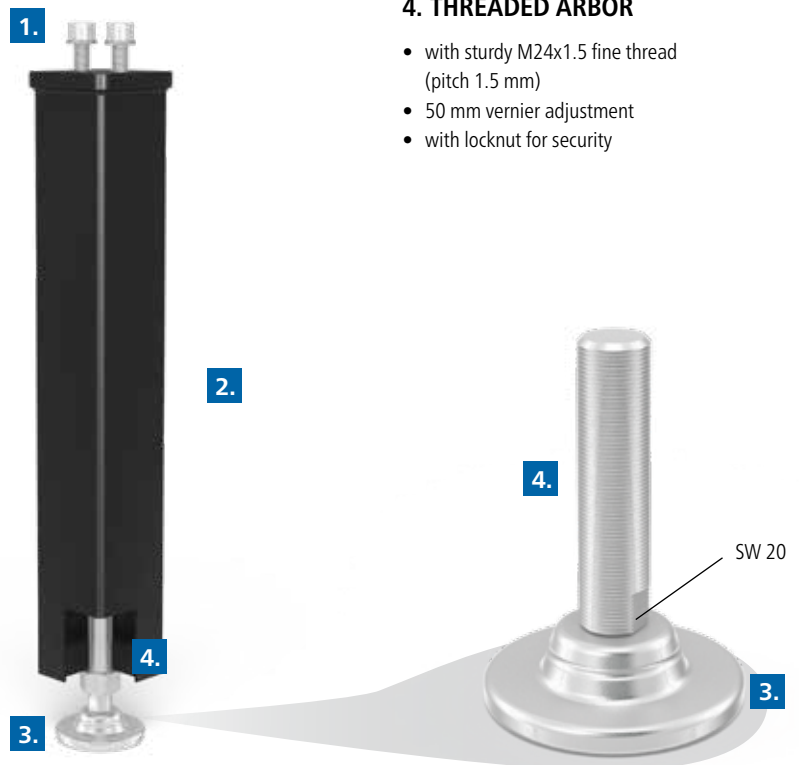
- sturdy square pipe 90x90 mm
- for increased stability
- powder coated

3. BASE PLATE

- Ø 90 mm
- for optimum pressure distribution
- made of twisted bulk material
- for increased stability and precision

4. THREADED ARBOR

- with sturdy M24x1.5 fine thread (pitch 1.5 mm)
- 50 mm vernier adjustment
- with locknut for security

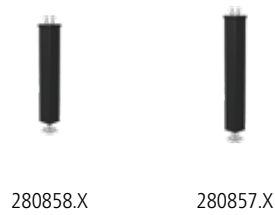
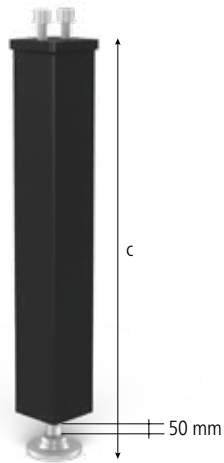


Leg standard equipment

Description:

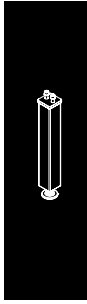
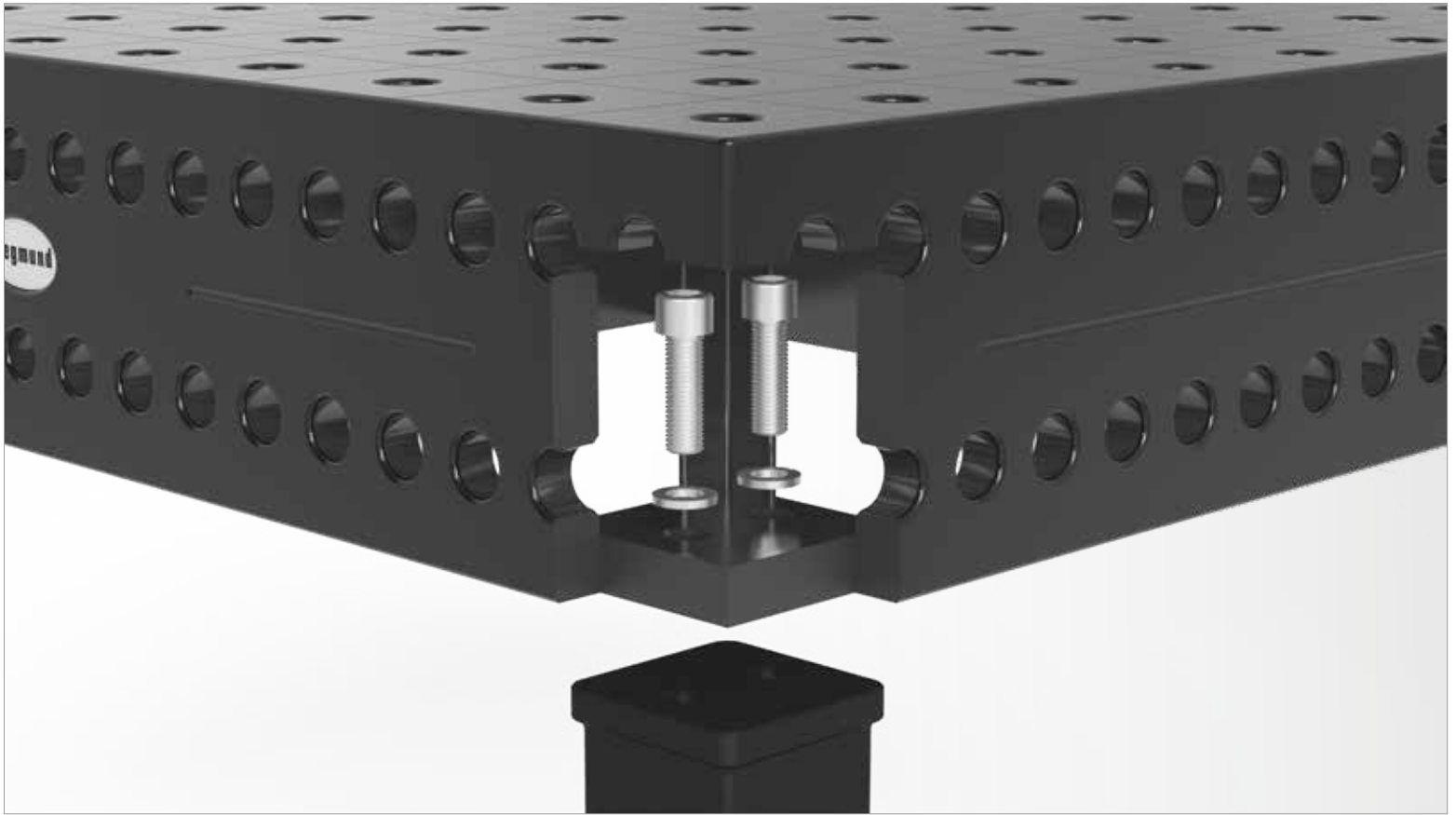
Standard Leg, available in various lengths (special lengths upon request). Load-bearing capacity 2,000 kg, adjustable up to 50 mm (vernier adjustment).

Leg Boot protects threaded arbor from dirt and prevents damages to the welding hose, due to the constant contact with the threaded arbor.



280859





	Length: (a)	Width: (b)	Height: (c)	Weight:	Item No.
Leg standard equipment 650 - 50 mm vernier adjustment	90 mm	90 mm	650 mm	8,50 kg	2-280858.X ●
Leg standard equipment 750 - 50 mm vernier adjustment	90 mm	90 mm	750 mm	9,00 kg	2-280857.X ●
Leg standard equipment, special height min. 150 mm - 50 mm vernier adjustment	90 mm	90 mm			2-280856.XS ○
Further sizes and heights available upon request					○
Sleeve for Table Leg - for Leg Standard / Floor anchoring	95 mm	95 mm	100 mm	0,45 kg	2-280859 ●

● = Item produced for stock; ○ = Item produced on order; Explanations see page 84

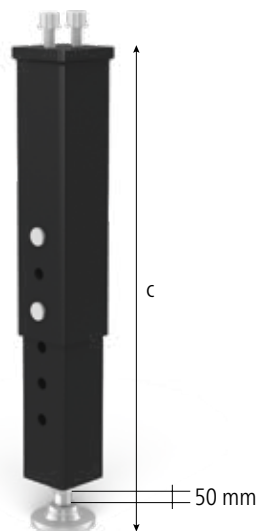
Table legs not suitable for Basic tables.

Leg height-adjustable

Description:

Leg is height adjustable in a range of 450-700 mm or 550-900 mm. The load-bearing capacity remains 2,000 kg, regardless of height. A second lock bolt ensures additional stability. The leg can be vernier adjusted up to 50 mm.

Leg Boot protects threaded arbor from dirt and prevents damages to the welding hose, due to the constant contact with the threaded arbor.



280878.X

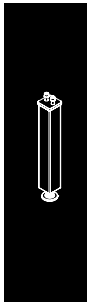


280877.X



280859.1





	Length: (a)	Width: (b)	Height: (c)	Weight:	Item No.
Leg height-adjustable 450-700 - 50 mm vernier adjustment - Table height 650-900 mm adjustable	90 mm	90 mm	450-700 mm	9,20 kg	2-280878.X ●
Leg height-adjustable 550-900 - 50 mm vernier adjustment - Table height 750-1100 mm adjustable	90 mm	90 mm	550-900 mm	11,00 kg	2-280877.X ●
Additional sizes upon request					○
Sleeve for Table Leg - Aluminum - for Leg height-adjustable System 28 - for Leg Standard / Floor anchoring System 22	88 mm	88 mm	150 mm	0,45 kg	2-280859.1 ○

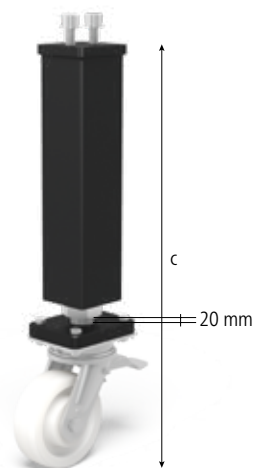
● = Item produced for stock; ○ = Item produced on order; Explanations see page 84

Table legs not suitable for Basic tables.

Leg with Caster and Locking Brake

Description:

Leg with Caster and Locking Brake, load-bearing capacity 800 kg per caster. Each leg can be height-adjusted up to 20 mm (vernier adjustment), by turning the spacer plate and is equipped with a reinforced arbor.



280876.X



	Length: (a)	Width: (b)	Height: (c)	Weight:	Item No.
Leg with Caster and Locking Brake 650 - 20 mm vernier adjustment	90 mm	90 mm	650 mm	9,00 kg	2-280876.X ●
Additional sizes upon request					○

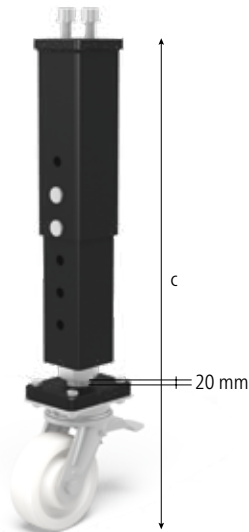
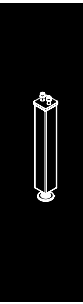
● = Item produced for stock; ○ = Item produced on order; Explanations see page 84

Table legs not suitable for Basic tables.

Leg height-adjustable with Caster and locking Brake

Description:

Leg height-adjustable with Caster and Locking Brake, load-bearing capacity 800 kg and vernier adjustable up to 20 mm.



280879.X



	Length: (a)	Width: (b)	Height: (c)	Weight:	Item No.
Leg height-adjustable with Caster and locking Brake 550-750 - 20 mm vernier adjustment - Table height 750-950 mm adjustable	90 mm	90 mm	550-750 mm	14,70 kg	2-280879.X ●
Additional sizes upon request					○

● = Item produced for stock; ○ = Item produced on order; Explanations see page 84

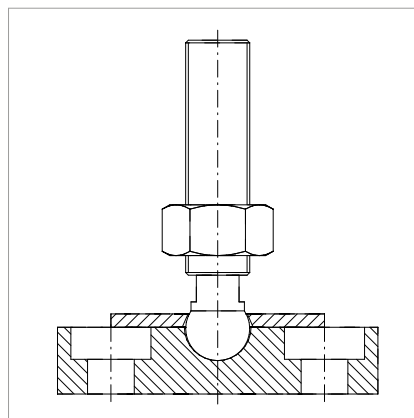
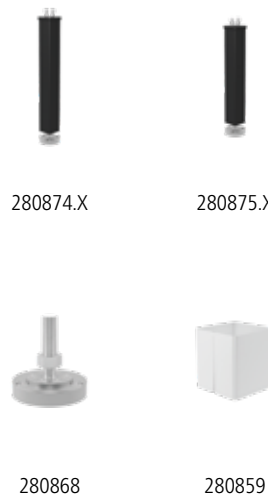
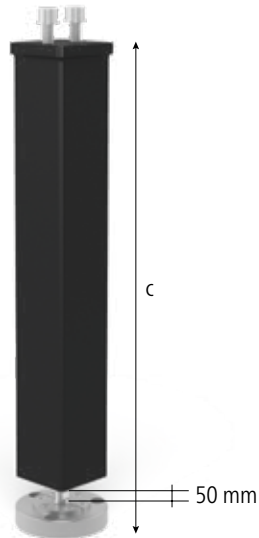
Table legs not suitable for Basic tables.

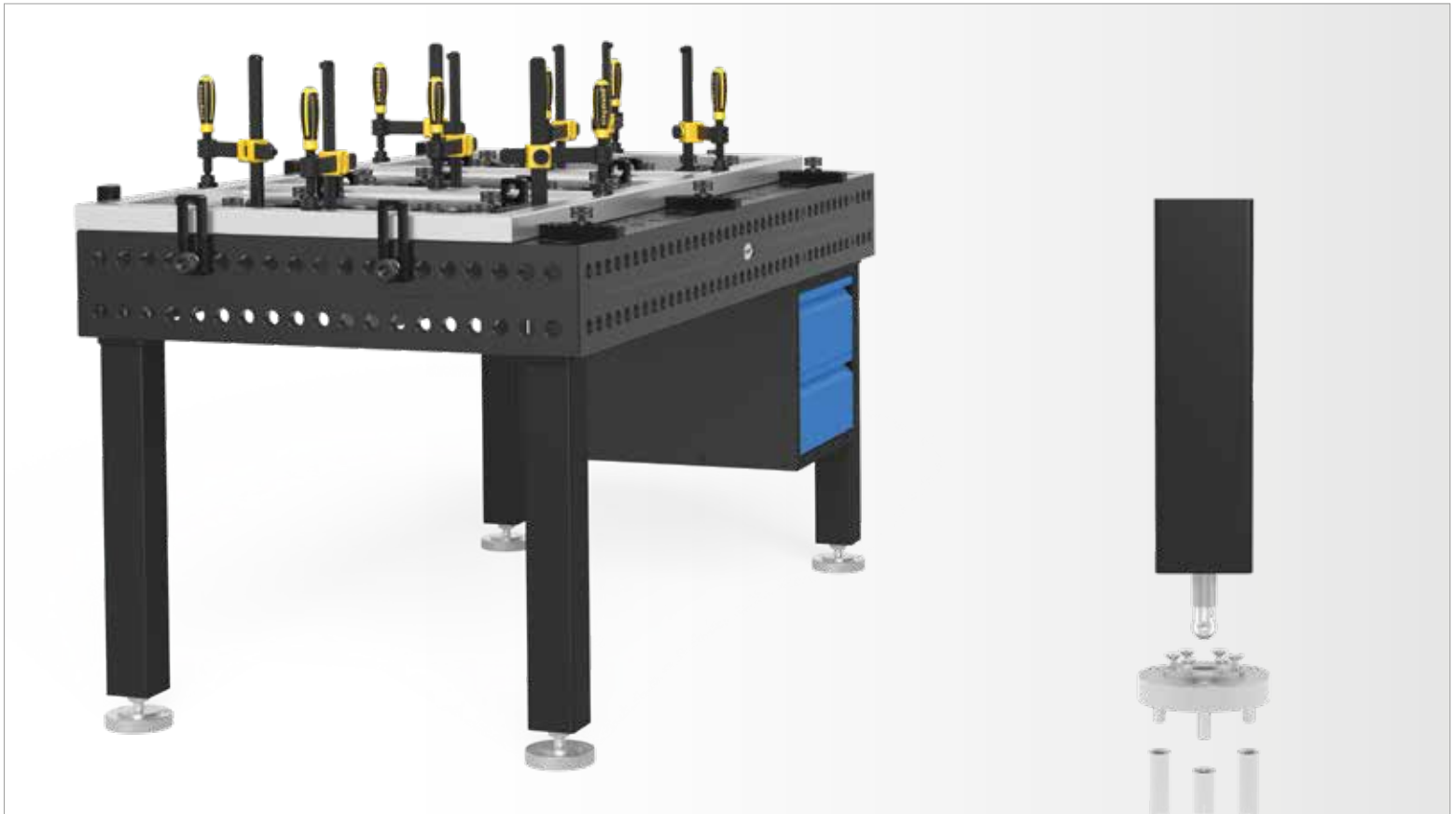
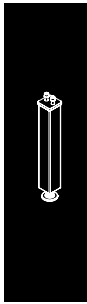
Leg with Floor Anchoring

Description:

Leg with floor anchoring, load-bearing capacity of 2,000 kg and suitable for all applications that demand stability. Leg is adjustable up to 50 mm (vernier adjustment).

Leg Boot protects threaded arbor from dirt and prevents damages to the welding hose, due to the constant contact with the threaded arbor.





	Length: (a)	Width: (b)	Height: (c)	Ø: (o)	Weight:	Item No.
Leg with Floor Anchoring 650 - 50 mm vernier adjustment - Additional sizes upon request	90 mm	90 mm	650 mm		8,50 kg	2-280874.X ●
Leg with Floor Anchoring 750 - 50 mm vernier adjustment - Additional sizes upon request	90 mm	90 mm	750 mm		9,00 kg	2-280875.X ●
Additional sizes upon request						○
Plate for Floor Anchoring - Interchangeable with base plate for leg standard equipment and leg height adjustable.			130 mm	130 mm	3,00 kg	2-280868 ●
Heavy- Duty Bolt - 1 set = 3 screws + 3 studs					0,40 kg	2-280869 ●
Sleeve for Table Leg - for Leg Standard / Floor anchoring	95 mm	95 mm	100 mm		0,45 kg	2-280859 ●

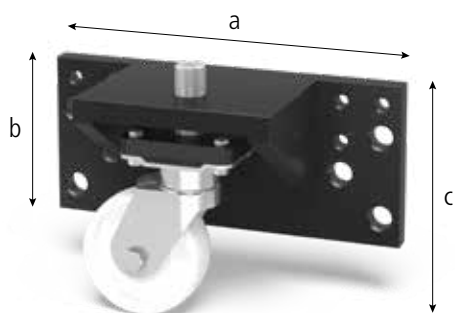
● = Item produced for stock; ○ = Item produced on order; Explanations see page 84

Table legs not suitable for Basic tables.

Fastening Plate with Caster

Description:

Fastening Plate, enables mobility of tables with low design height. The hexagon socket on top of the arbor enables height adjustment.



280867

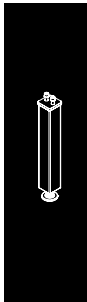


Length: (a)	Width: (b)	Height: (c)	Weight:	Item No.
450 mm	205 mm	300 mm	36,00 kg	2-280867 ○

Fastening Plate with Caster
 - 50 mm vernier adjustment
 - for Work Table system 28 and 16

● = Item produced for stock; ○ = Item produced on order; Explanations see page 84

Base Plate



Description:

Base Plate, especially designed for the connection frame, to enable its use outside of the rail system. It can also be used in all system 28 tables. Legs have base plates with system 28 bore holes, when used in combination with Professional Tables. (Please specify when ordering)



280855.X



160855.X



	Height: (c)	Ø: (o)	Weight:	Item No.
Base Plate - 50 mm vernier adjustment - M24x1.5 thread for vernier adjustment - for connecting frame	130 mm	90 mm	1,00 kg	2-280855.X ●
Base Plate - 40 mm vernier adjustment - M16x1.5 thread for vernier adjustment - for system 28 welding table	100 mm	70 mm	0,40 kg	2-160855.X ●

● = Item produced for stock; ○ = Item produced on order; Explanations see page 84

Hydraulic Lift



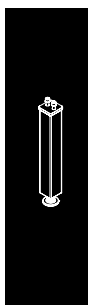
Description:

Hydraulic Lift, facilitates quick and smooth height adjustment of welding- and clamping tables. Consequently, it simplifies handling of large work pieces.

Additional bearing loads and options in special sizes are available upon request.

Cable length for feed cable and operation unit is 3 m each. Basic height of Hydraulic Lift equals its minimum height. Maximum height results from basic height plus specified effective stroke. Height specifications refer to lifting platform without table.





	Length: (a)	Width: (b)	Height: (c)	Weight:	Item No.
Hydraulic Lift - for Work Table 280010 - load-bearing capacity 1000 kg / effective stroke 925 mm	990 mm	990 mm	235 mm	210,00 kg	5-289084 ○
Hydraulic Lift - for Work Table 280025 - load-bearing capacity 1000 kg / effective stroke 700 mm	1190 mm	790 mm	200 mm	270,00 kg	5-289905 ○
Hydraulic Lift - for Work Table 280015 - load-bearing capacity 2000 kg / effective stroke 700 mm	1190 mm	1190 mm	200 mm	300,00 kg	5-289239 ○
Hydraulic Lift - for Work Table 280035 - load-bearing capacity 2000 kg / effective stroke 800 mm	1490 mm	990 mm	200 mm	450,00 kg	5-289132 ○
Hydraulic Lift - for Work Table 280050 - load-bearing capacity 2000 kg / effective stroke 800 mm	1490 mm	1490 mm	280 mm	530,00 kg	5-289088 ○
Hydraulic Lift - for Work Table 280020 - load-bearing capacity 2000 kg / effective stroke 1000 mm	1990 mm	990 mm	230 mm	580,00 kg	5-289085 ○
Hydraulic Lift - for Work Table 280060 - load-bearing capacity 2000 kg / effective stroke 1000 mm	1990 mm	1190 mm	280 mm	800,00 kg	5-289893 ○
Hydraulic Lift - for Work Table 280045 - load-bearing capacity 3000 kg / effective stroke 1000 mm	1990 mm	1990 mm	350 mm	900,00 kg	5-289897 ○
Hydraulic Lift - for Work Table 280030 - load-bearing capacity 2000 kg / effective stroke 1300 mm	2390 mm	1190 mm	280 mm	800,00 kg	5-289367 ○
Hydraulic Lift - for Work Table 280040 - load-bearing capacity 3000 kg / effective stroke 1600 mm	2990 mm	1490 mm	350 mm	1200,00 kg	5-289087 ○
Hydraulic Lift - for Work Table 280055 - load-bearing capacity 5000 kg / effective stroke 1600 mm	3990 mm	1990 mm	460 mm	2200,00 kg	5-289089 ○

● = Item produced for stock; ○ = Item produced on order; Explanations see page 84

For technical reasons height is subject to change.